

## Sleeveless Summer Navy Dress Tutorial

### Description



When it comes to summer,' you can never have too many' sleeveless dresses. The lush dark blue shade will mean that you can keep wearing this dress when the weather starts to get cool. Throw a jumper on and you are set. ' The bonus with this dress? We are' revisiting an older pattern so for those hoping to create sleeves for this dress can easily do so by visiting [this tutorial](#).

## ***Material***

3 yards of [IL019 Dress Blue Softened](#)  
Matching sewing thread



## ***Tools***

Pattern master, pattern paper  
Paper scissors, fabric scissors  
Fabric marker, pins, tape measure  
Rotary cutter, Bias tape maker





## ***Time***

3-4 hours

## ***Difficulty***

Beginner

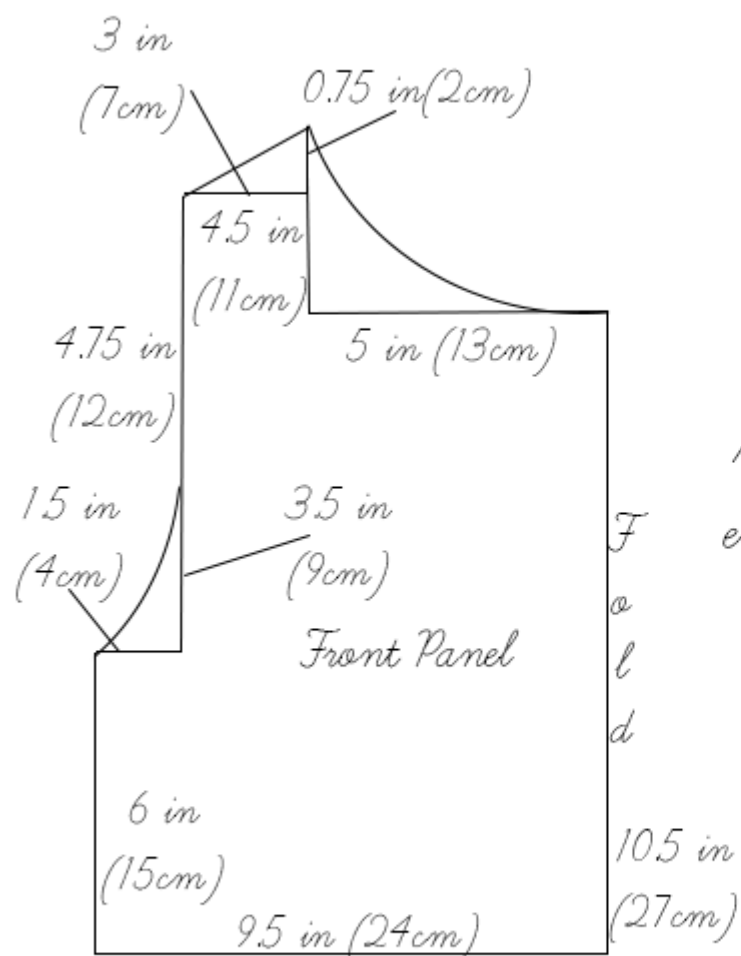
## ***Step***

Note: Prewash your fabric and tumble dry it until it is still slightly moist, let this dry in room temperature.

1. Iron the fabric so it is easier to work with
2. The diagram shows the pattern for a size US6-8 (UK10-12). Remember to add 3/8in (1cm) seam allowance around all panels (apart from the arms and collar where you will be using bias tape for binding). If you need help to

grade your pattern, please follow [this tutorial](#).





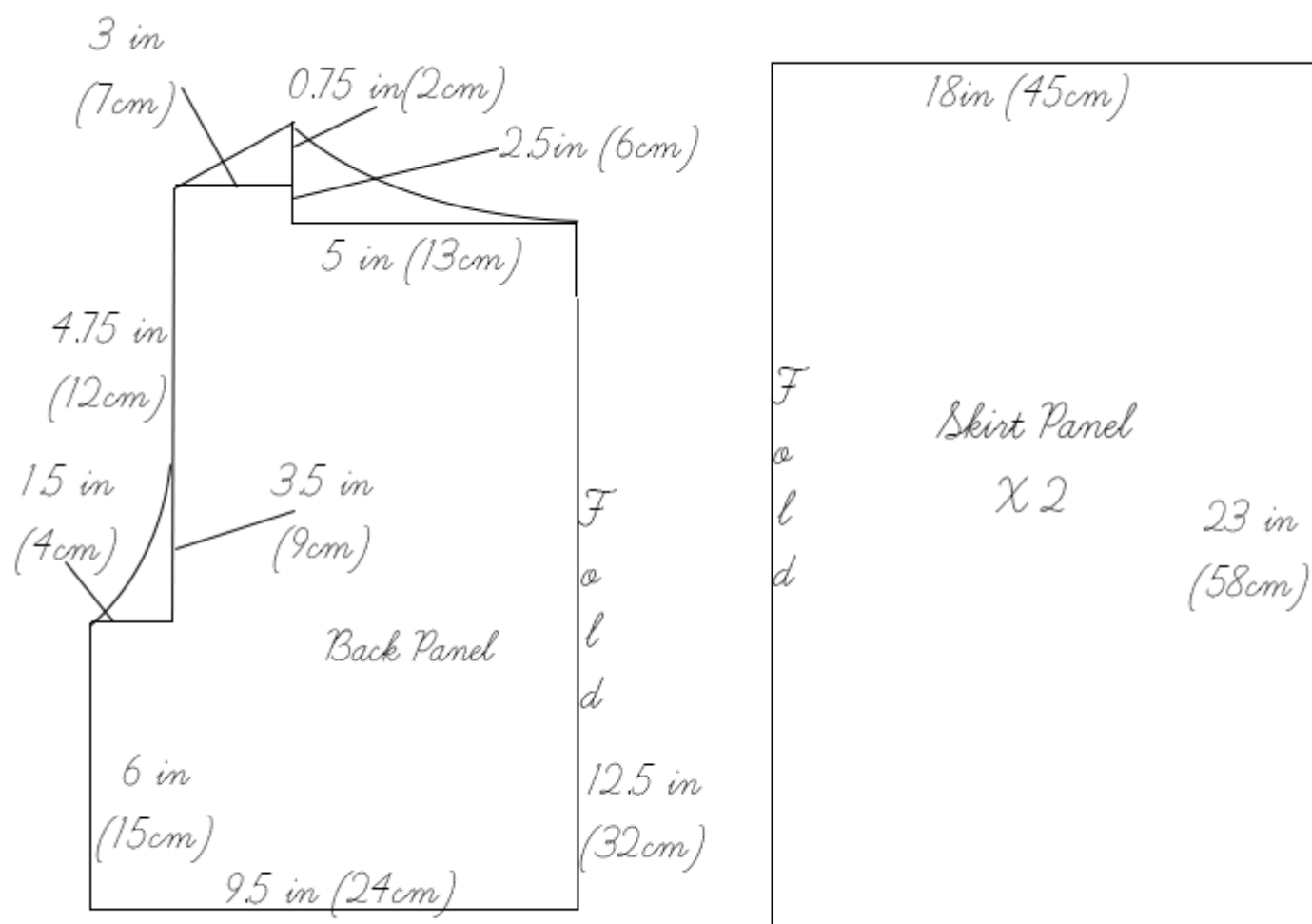
*Summer Sleeveless*

*Linen Dress*

*Add 3/8 inches (1cm)*

*Seam Allowance on all seams,  
except ones marked with fold, or  
the armholes and collar*

*Note: not to scale*



3. Use a serger, or choose your own method to protect the seams from fraying. Make sure the method you choose does not add weight to the fabric.
4. Pin together the side seams of the body, on both side. Stitch together and press open.



5. Repeat the same for the shoulder seam.





6. Pin the side seams of the skirt panels together. Stitch them together and press open.



7. With the material facing the right side, stitch a wide running stitch (without going back and forth to secure it at the beginning and end) about 1/8 inch (0.5cm) away from the top edge. Leave a long tail of thread at both ends of the stitching.



8. Gently pull the thread of the stitching so you will start to gather the material together. The final width of the skirt panels is determined by the width of the bodice panels. Make sure you match the side seams of the skirt and the bodice together. The notch marks at the centre of the bodice and skirt panel will prove to be useful too.





9. Once it is gathered to the right length, with the skirt panel's right side facing you and the wrong side of the bodice facing you, join the gathered seam together with the bottom of the bodice.





10. Stitch this together at the given seam allowance.
11. Turn it onto the right side and press on the seam. Then run a top stitch over the seam, with the inside seam turned upwards. The top stitch line should be as close to the seam of the bodice as possible.
12. Following [this tutorial](#), make enough bias binding tape for both armholes and collar.
13. Pin the tape along the seams, leaving around 2 1/2 inches (5cm) opening of the seam, and around 3 inches (7.5cm) bias tape tail unpinned.



14. Stitch along the pinned tape.
15. Manually fold the bias tape backwards and create a crease where both ends of the tape meet.



16. Pin the creased part of the tape together with the wrong side facing outwards. Stitch along this line, trim the rest of the tape off and press open the seam.





17. Fold the tape back to its original form and pin the remaining parts onto the seam.



18. Matching the stitching with where you finished, stitch the remaining tape on.





19. Fold the 3/8 inch (1cm) seam allowance of the bottom hem upwards onto its wrong side. Press it and top stitch over this fold.



**Possibly one of the easiest and quickest yet impressive tutorial. Why not browse around our website and take your pick of fabric from**

# our plethora of linen?

## CATEGORY

1. TUTORIALS

## Category

1. TUTORIALS

## Date Created

July 13, 2015

## Author

cynthia-fong